

MODAT-100

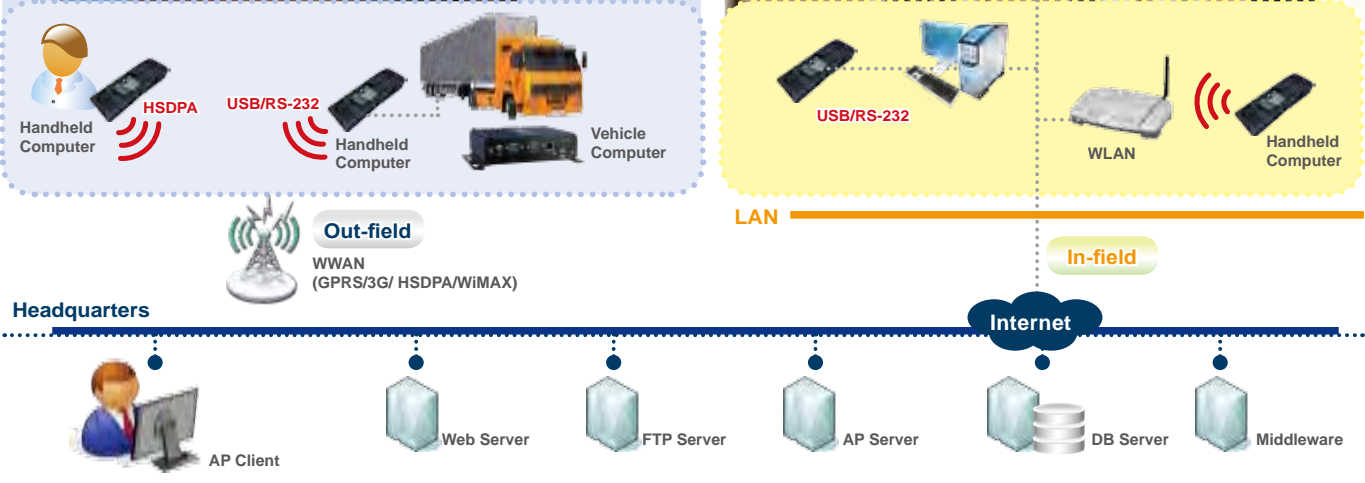
Mobile POS Terminal

- 3.5" TFT sunlight readable LCD touch screen
- Marvell PXA 310 624 MHz CPU
- Pre-installed Windows Mobile 6.5
- Built-in 32-channel GPS Receiver
- Built-in smart card reader & magnetic stripe reader & 2" thermal printer
- 1D laser barcode data collection
- 3 Megapixels with low power consumptions camera
- Bluetooth, Wi-Fi and 3.5G/HSDPA wireless communication



Point-of-Service Application

Standard Point-of-Service(POS) features, such as smart card readers, magnetic stripe card readers and thermal printers come integrated for an all-in-one mobile solution. Equipped with 1D laser barcode and 3 Megapixels camera, the MODAT-100 can capture data and images via a built-in high performance wireless communication module. The MODAT-100 offers mobility and flexibility that promises to streamline workflow and enhance productivity.



I/O Interface

• MicroSD

You can install applications on your MODAT-100 by using:

- Microsoft ActiveSync. ActiveSync lets you transfer files, synchronize files, remotely debug, and perform other device management activities. ActiveSync is a free application available from the Microsoft web site
- MicroSD card

• SIM Card

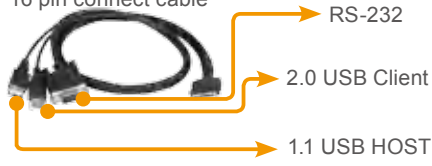
Insert SIM Card for 3.5G data transmission

• SAM Card

SAM (Security Authentication Module) card protects financial data transmission

• 16 pin Connector

16 pin connect cable



LED Indicators & HOT Keys

- Press Alpha to use the orange characters
- Press Fn to use the blue characters

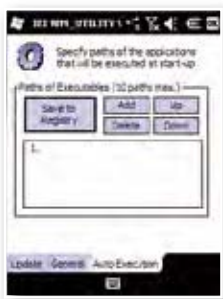
■ Bundled IEIMobile MODAT-100 Software Support

• Besides Windows Mobile SDK, the MODAT-100 provides an SDK (Software Development Kit)

- SDK (for embedded Visual C++)

• Utility

- IEI Utility (Registry management, start up program and function test)
- Remote Management Tool
- Locate versions of Boot Loader and OS image on the "General" page
- When a new version of OS and/or Boot Loader is detected it can be updated by pressing the "Yes" button.
- To open IEI Utility, click Start and select "Settings and System".
- To launch applications automatically, click the "Auto Execution" tab and add applications. Click the "Save to registry" button to save the settings.



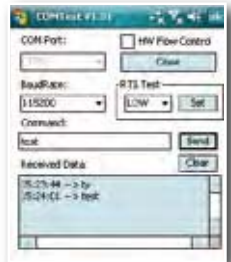
• Diagnostic and Demo AP

- Internet Demo
- Barcode Demo
- MSR/SCR Demo
- HSDPA Demo/Utility
- Printer Demo
- Camera Demo
- GPS Demo



• COM Port Debugging Tool

Diagnose the COM6 (RS-232 port) using the COM Port Debugging tool to receive/send messages from the specified COM port.

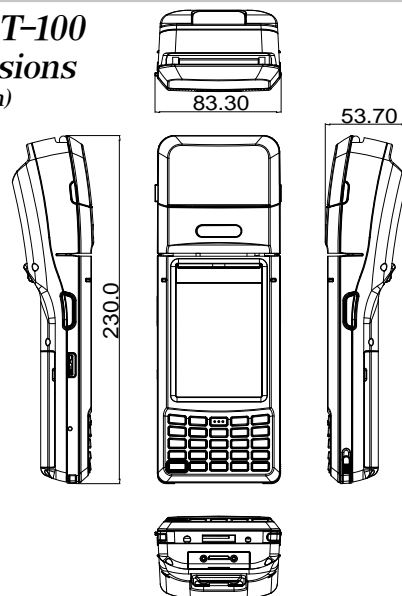




Specifications

Model		MODAT-100
Display	LCD Size	3.5" TFT LCD (Sunlight Readable)
	Brightness (cd/m ²)	190 cd/m ²
	Max Resolution	240 x 320 pixels QVGA
	Viewing Angle	80/80/80/80 Deg.
	Touch Screen	4-Wire Resistive Type Touch
System	CPU	Marvell® PXA 310 624 MHz
	Operation System	Microsoft® Windows® Mobile 6.5
	Memory	128 MB Flash + 256 MB SDRAM
	Storage	MicroSD Slot
Communication	Wireless LAN	Wi-Fi 802.11 b/g
	Bluetooth	Bluetooth® 2.1 + EDR
	3.5G	WCDMA/HSDPA
	GPS	GPS w/internal antenna
Data Collection	Barcode	1D Laser Scan Engine
	Camera	3 Megapixel CMOS Camera with LED Flash Light
Indicator & Buttons	LED Indicator	Charging/Barcode status LED HSDPA status LED
	Hot Keys	2 x Barcode Trigger
I/O Interface	Audio	1 x Headset
	Expansion	16-pin connector (RS232 / battery charging/ OTG-Host/ OTG-Client)
		2" Thermal Printer Smart Card Reader Support Magnetic Stripe Reader Support
Power	Power Adapter	Input: VAC:90 V~264 V Output: 12 V/3 A Wattage: 36 W
	Battery	7.4V 1,880 mAh battery
Environment	Operating Temperature	0°C ~ 50°C
	Storage Temperature	-20°C ~ 70°C
	Humidity	5%~95% non-condensing
	Drop Survival	1.2 M
	Environmental Protection	IP 54 (Excluding MSR/SCR/Printer)
Physical Characteristics	Certification	CE, FCC,
	Dimensions (LxWxH) (mm)	230 x 84 x 54
	Weight	546 g

MODAT-100 Dimensions (Unit: mm)



Optional Accessory List

Item	Part No.	Description
Cradle	MODAT-100-CR01-R10	Charging cradle integrated, one charging bay along with USB Host, USB Client and RS232 I/O ports
16-pin Cable	32024-001500-100-RS	16-pin cable connects to USB Host, USB Client and RS232
Battery Pack	31603-000014-RS	7.4V 1880 mAh Battery
Carrying Case	7Z000-MODAT100POUCH-RS	Black, professional protector case with shutter strap for MODAT-100



Battery Pack



Stylus



Power Adapter



Carrying Case



Cradle



Headset



16-pin Cable

Ordering Information

Part No.	Description
MODAT-100-WB65-En	3.5" TFT-LCD 190 cd/m ² QVGA Enterprise PDA with Marvell® PXA 310 624MHz CPU, HSDPA, 802.11 b/g Wireless, Bluetooth, 1D barcode Scanner, Smart Card Reader, Magnetic Stripe Card, Windows Mobile 6.5 OS, RoHS

Packing List

Item	Part No.	Q'ty	Description
Battery Pack	31603-000014-RS	1	7.4V 1880 mAh Battery
Carrying Case	7Z000-MODAT100POUCH-RS	1	Black, Professional protector case with shutter strap for MODAT-100
Power Adpater	63000-FSP036RAB613-RS	1	FSP036-RAB613;VAC:90V~264V;12V/3A;36W;PLUG Ψ1.35/Ψ3.5/NONE LOCK/LENGTH:9.5MM;1500MM;FSP
Stylus	7Z000-MODAT100STYLUS-RS	1	
Headset	7Z000-EMI164001S-RS	1	